

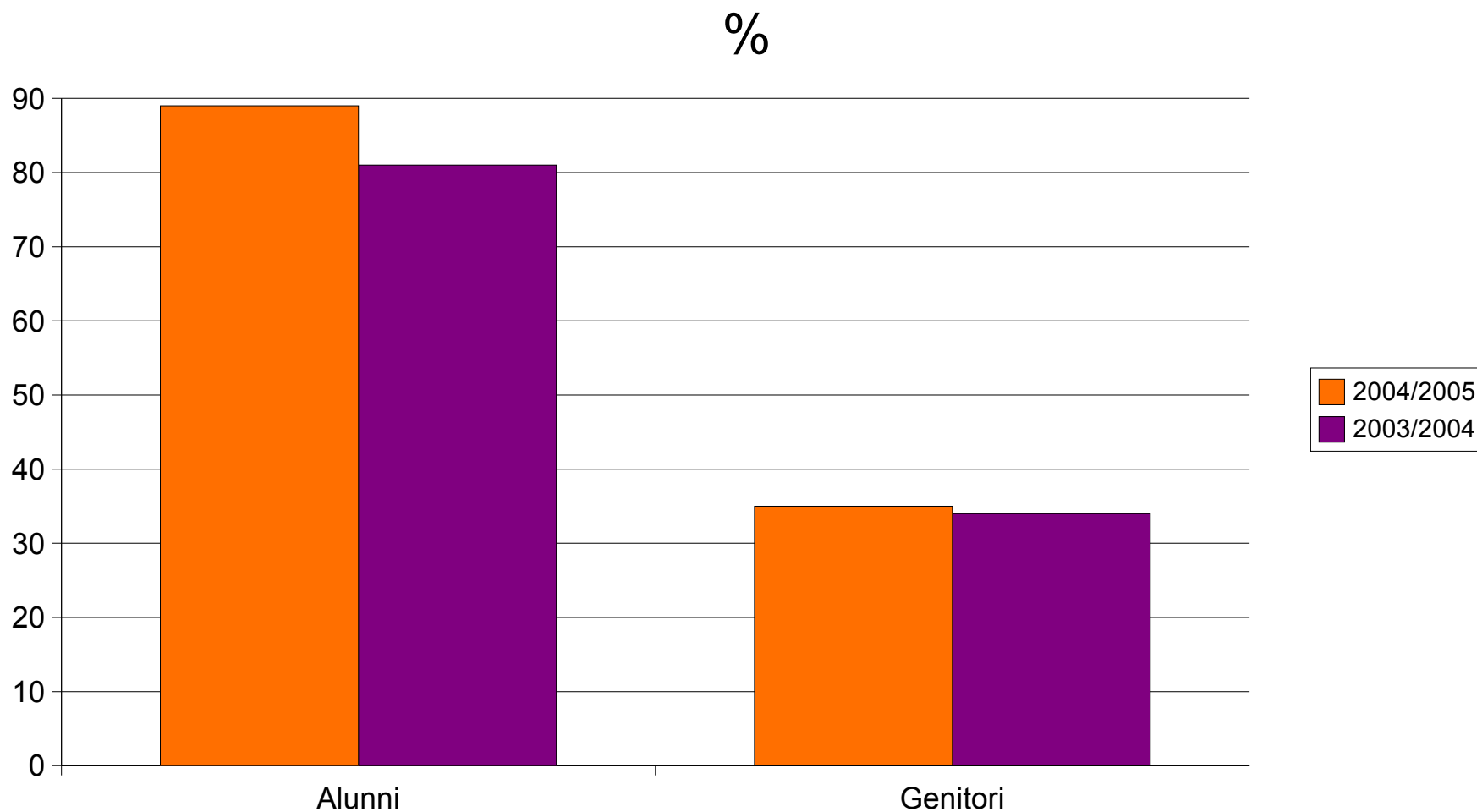
a.s.2004/2005

**Questionario di valutazione del servizio
scolastico**

SCUOLA SUPERIORE

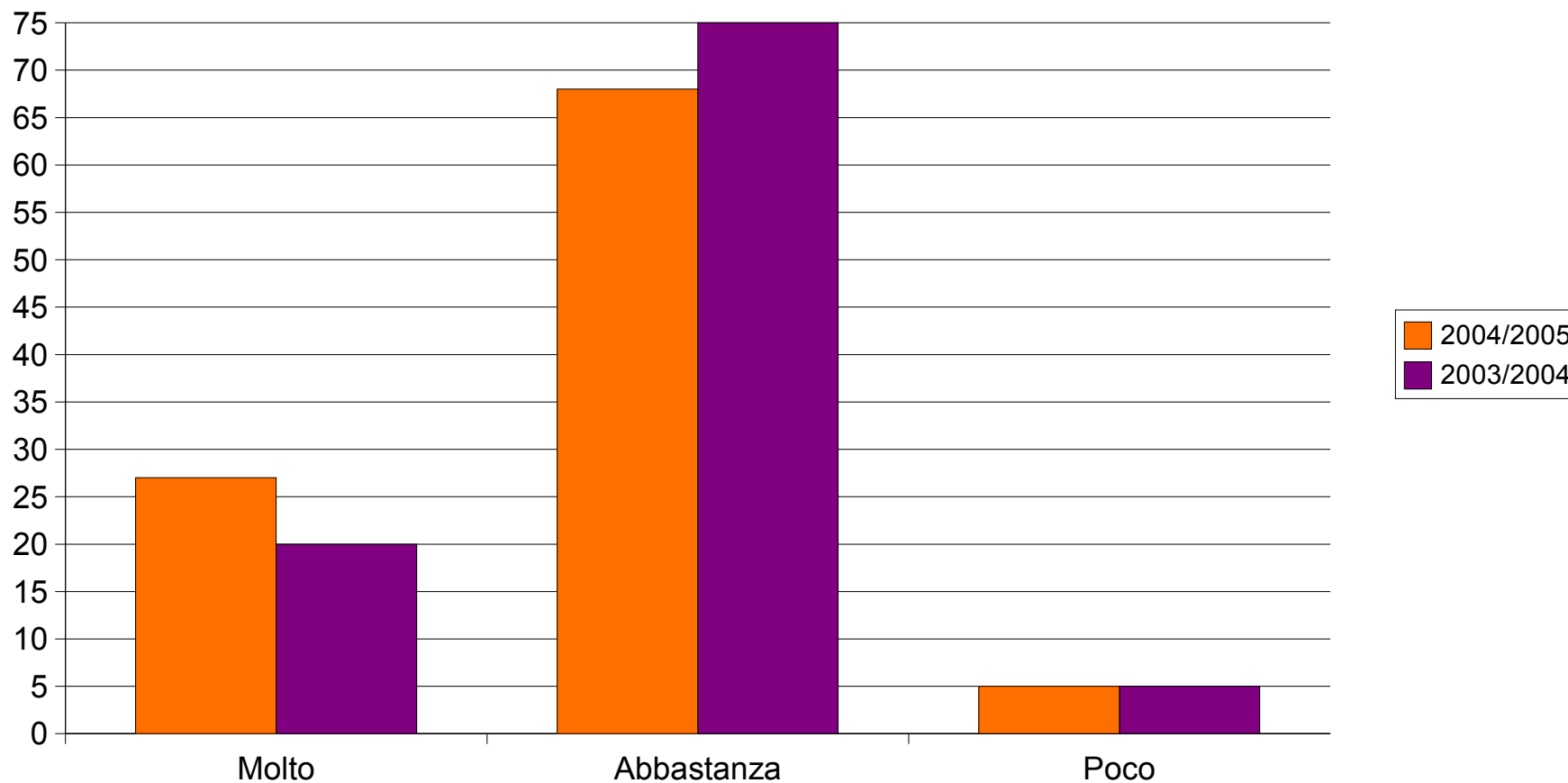
n. alunni 184

N. di questionari pervenuti



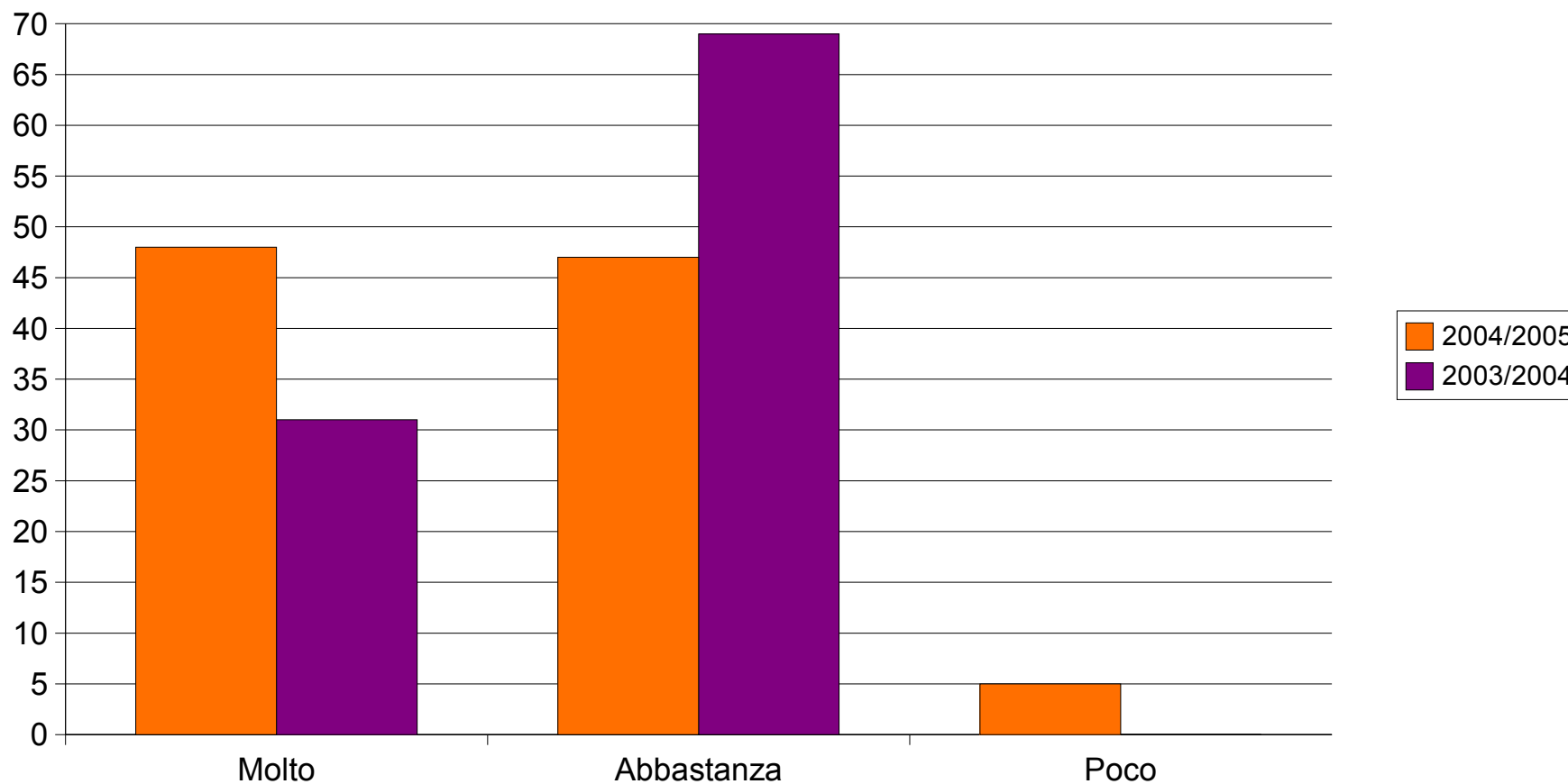
Soddisfazione generale

Alunni in %



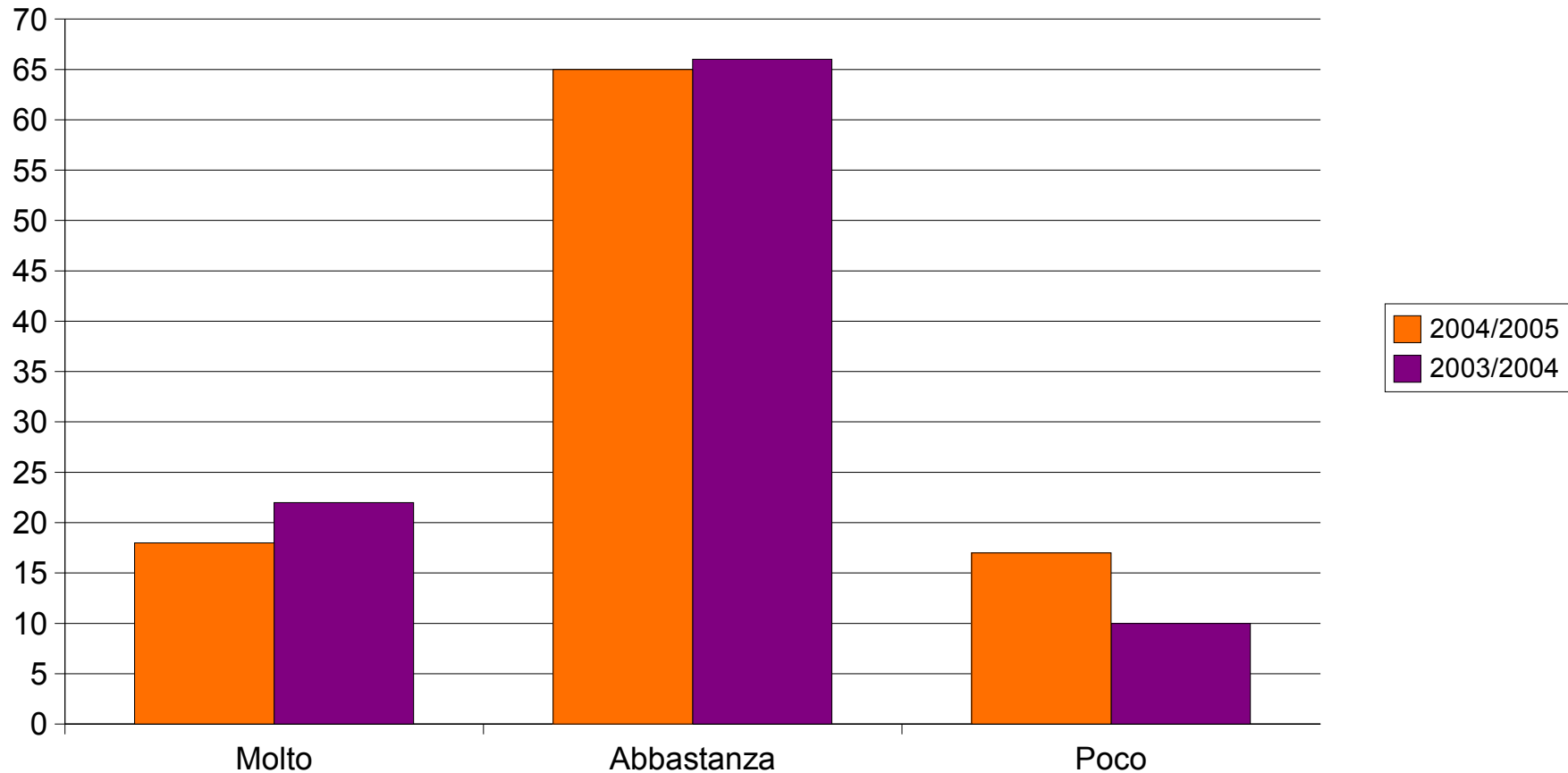
Soddisfazione generale

Genitori in %



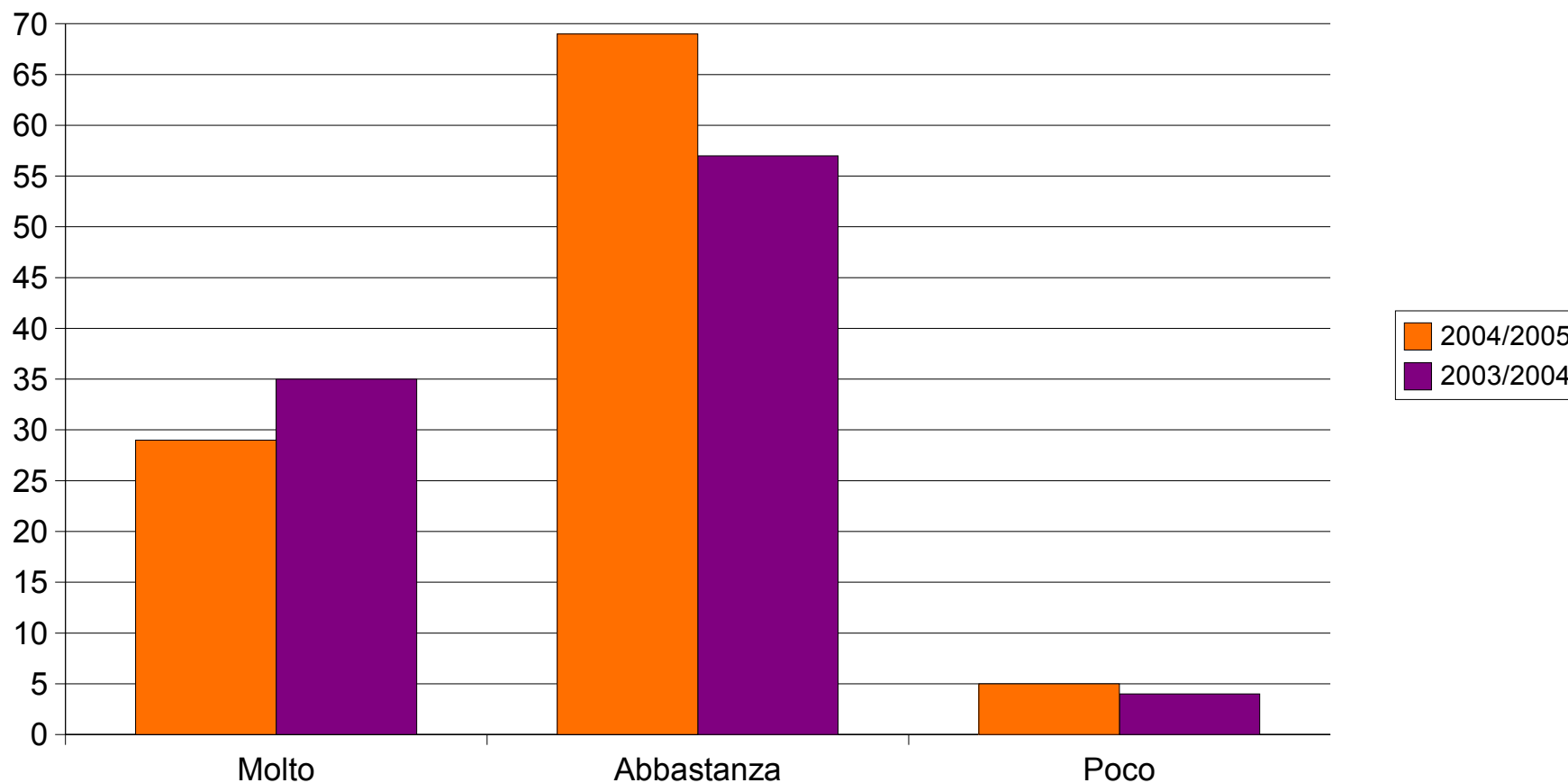
Attenzione alle proprie attese

Alunni in %



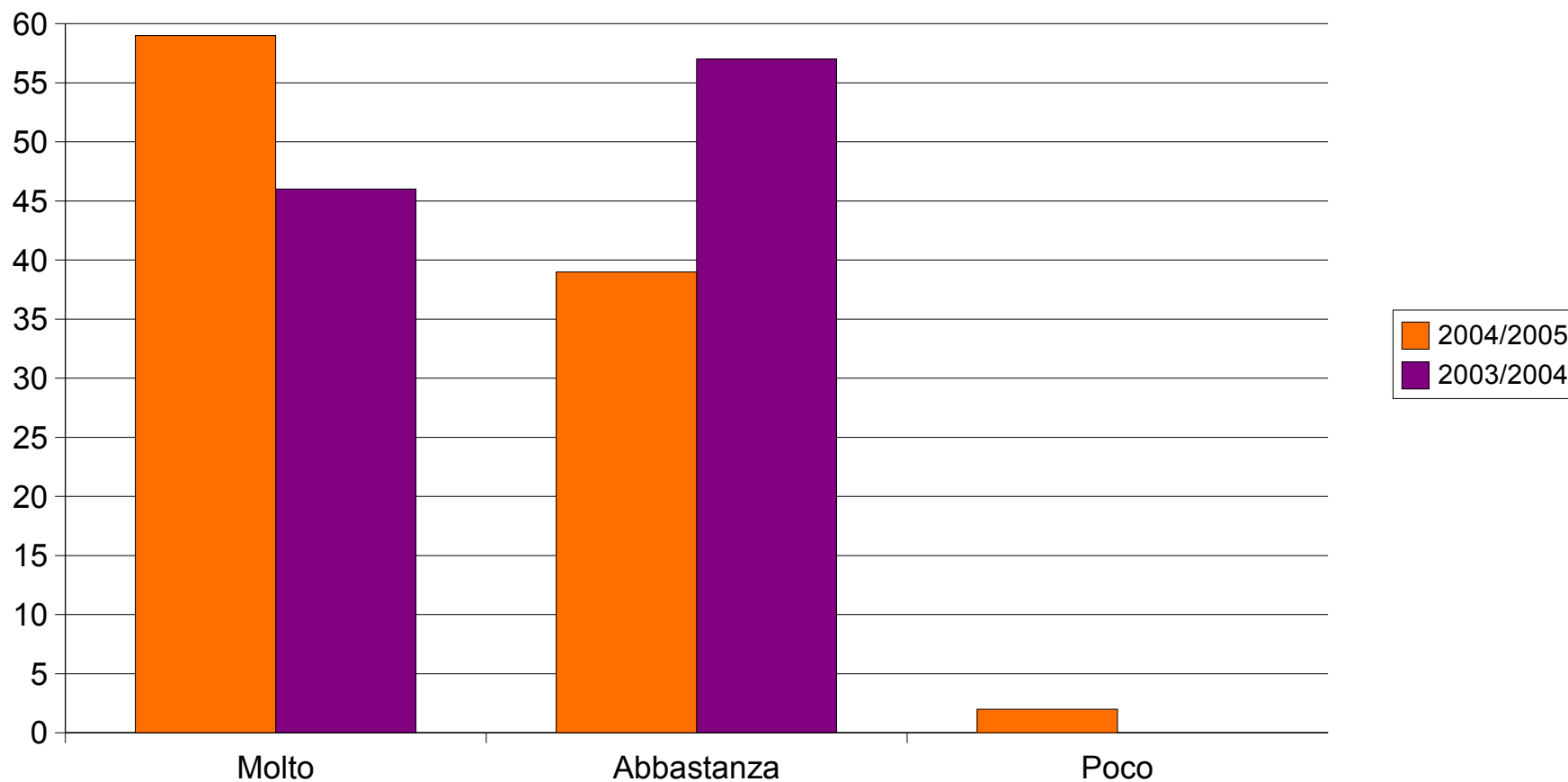
Soddisfazione dell'insegnamento

Alunni in %



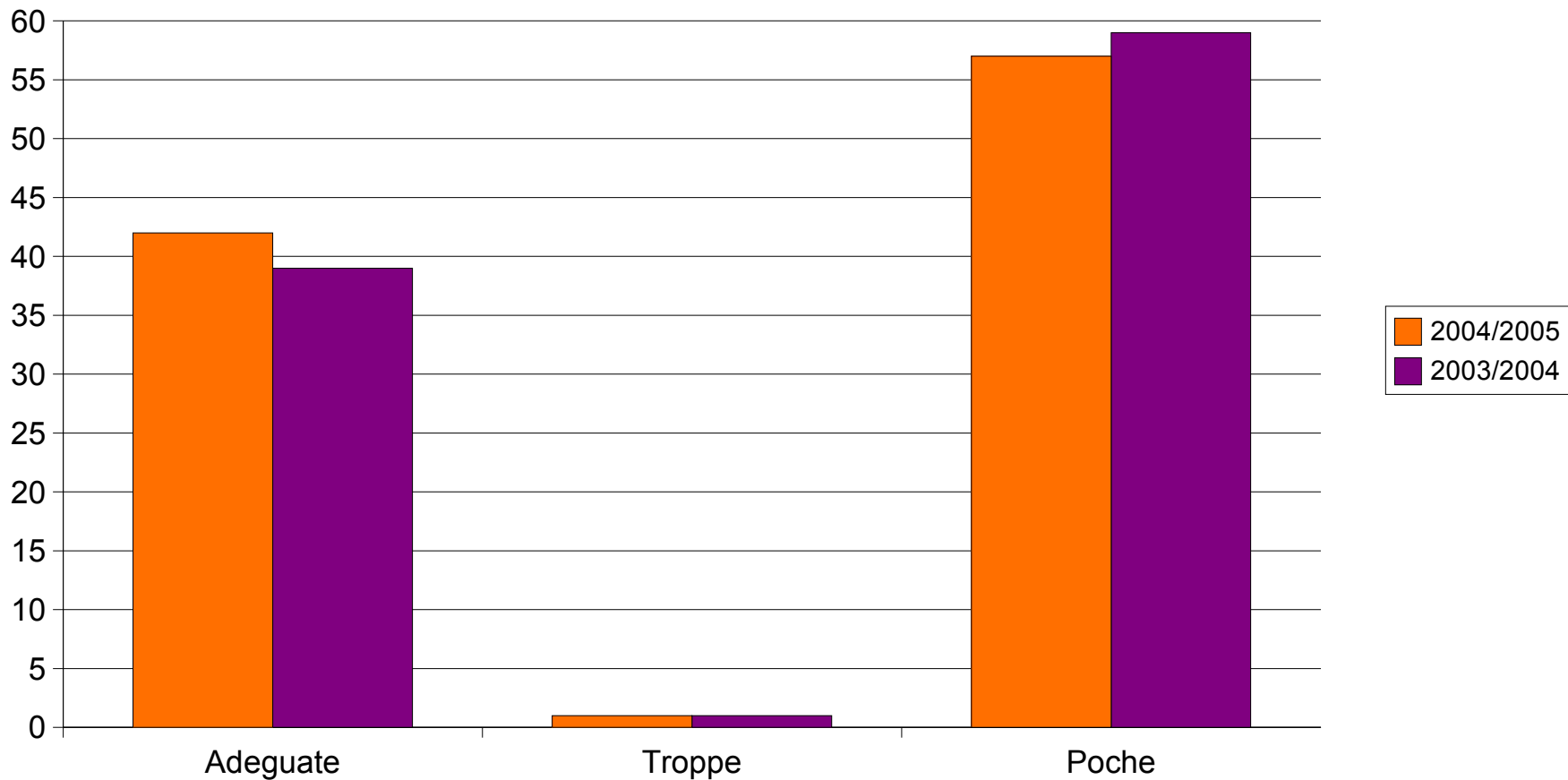
Soddisfazione dell'insegnamento

Genitori in %



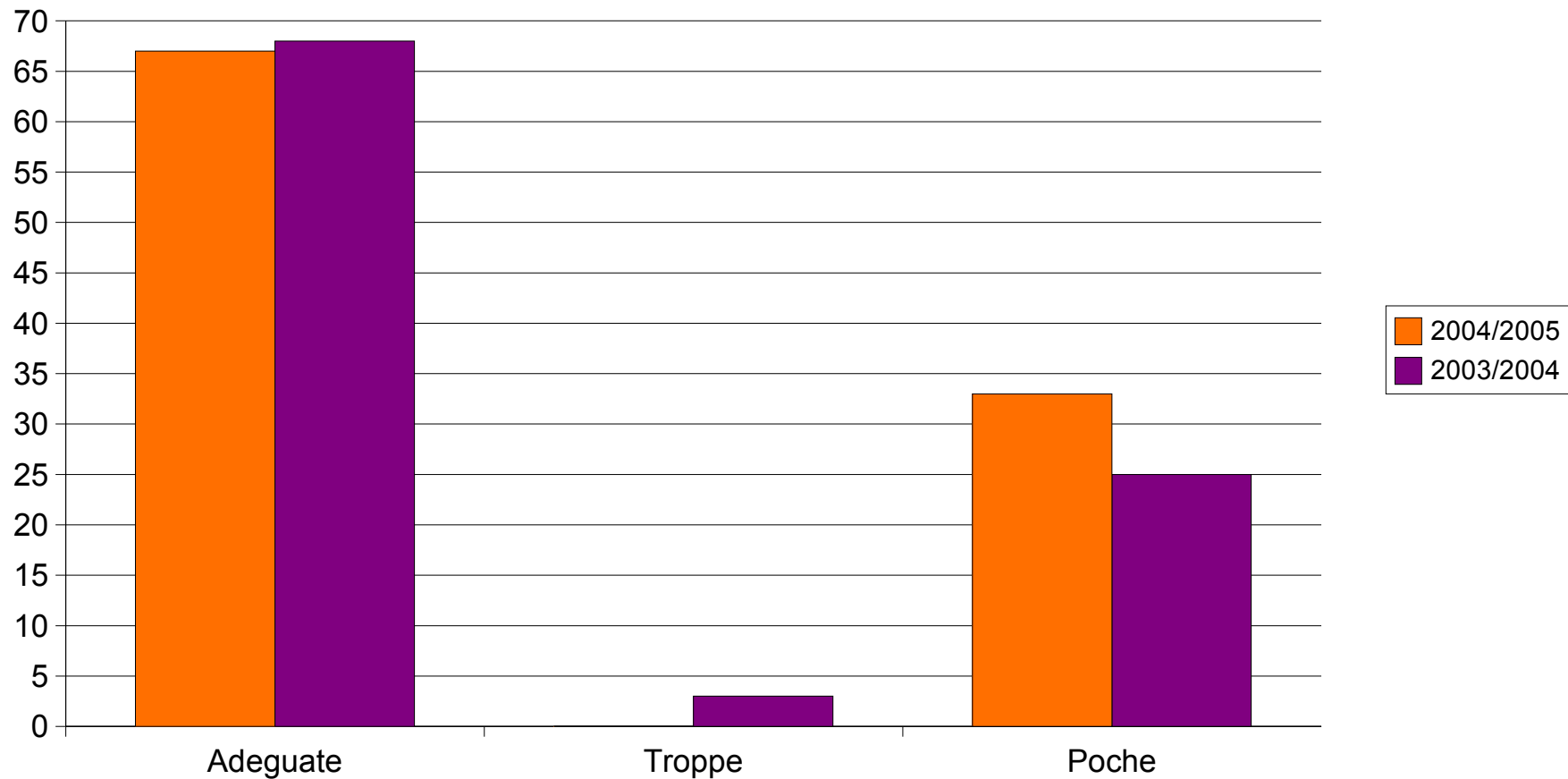
Le attività extra sono state:

Alunni in %



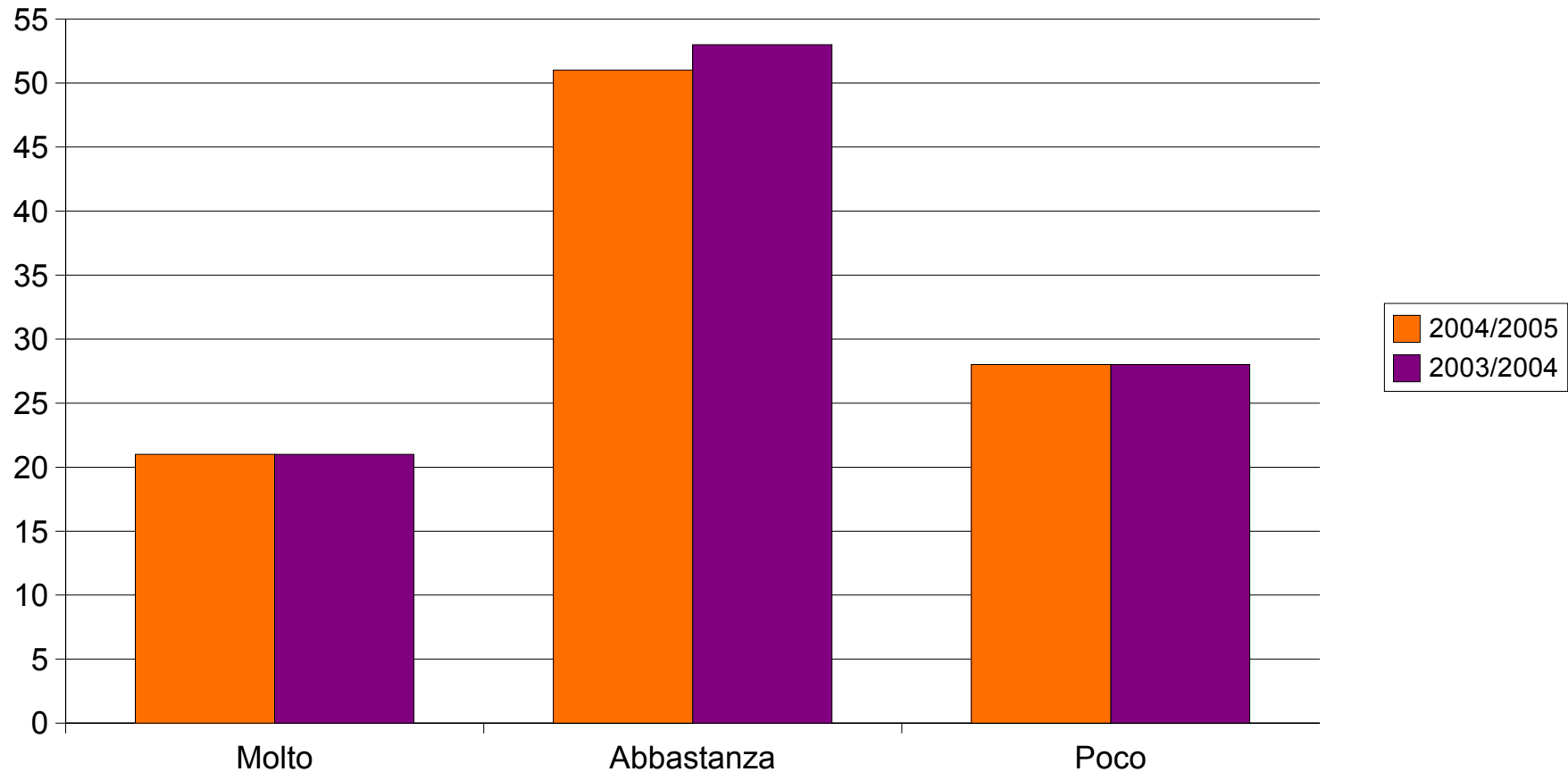
Le attività extra sono state:

Genitori %



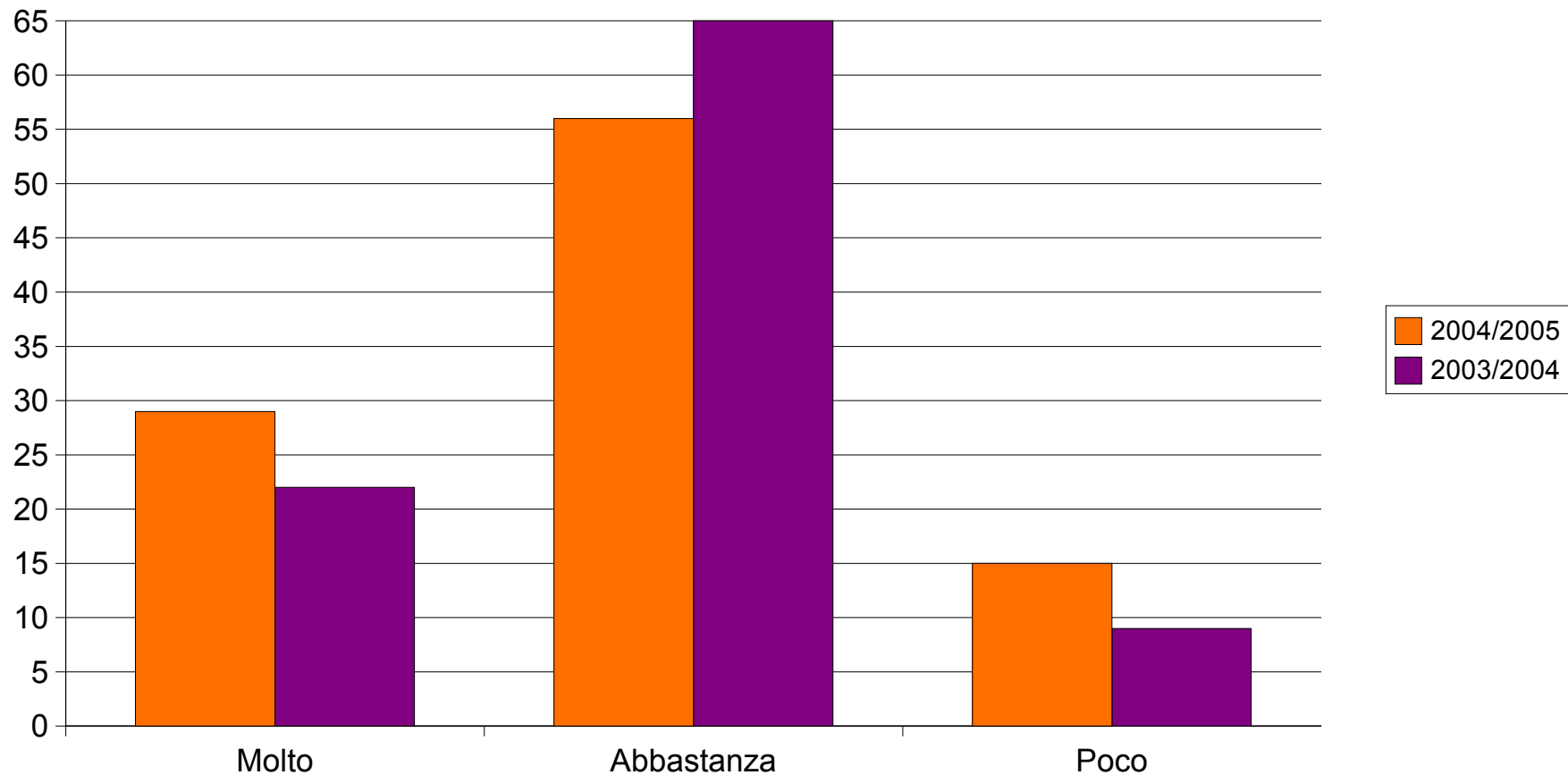
Qualità attività extra:

Alunni %



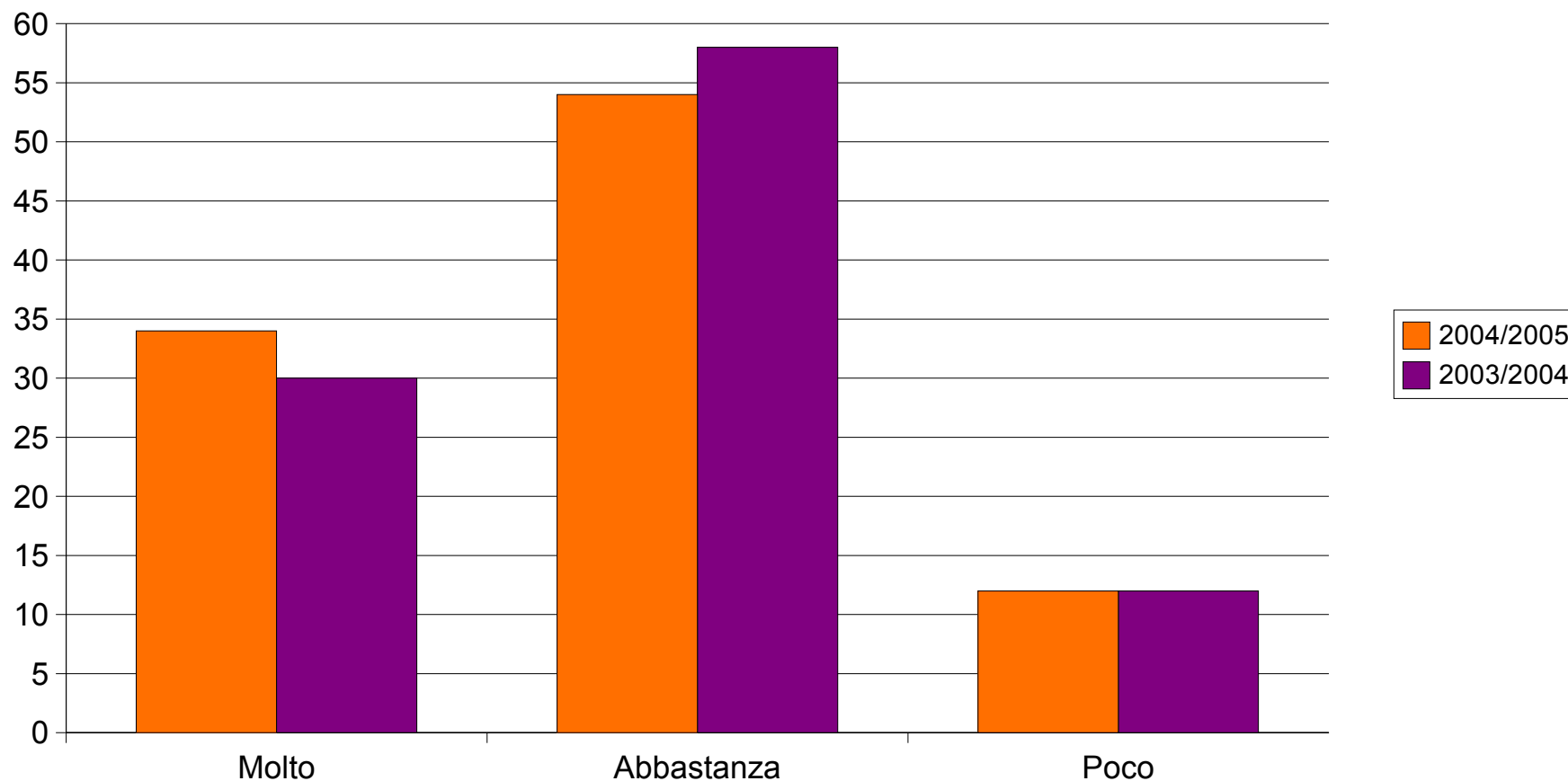
Qualità attività extra:

Genitori %



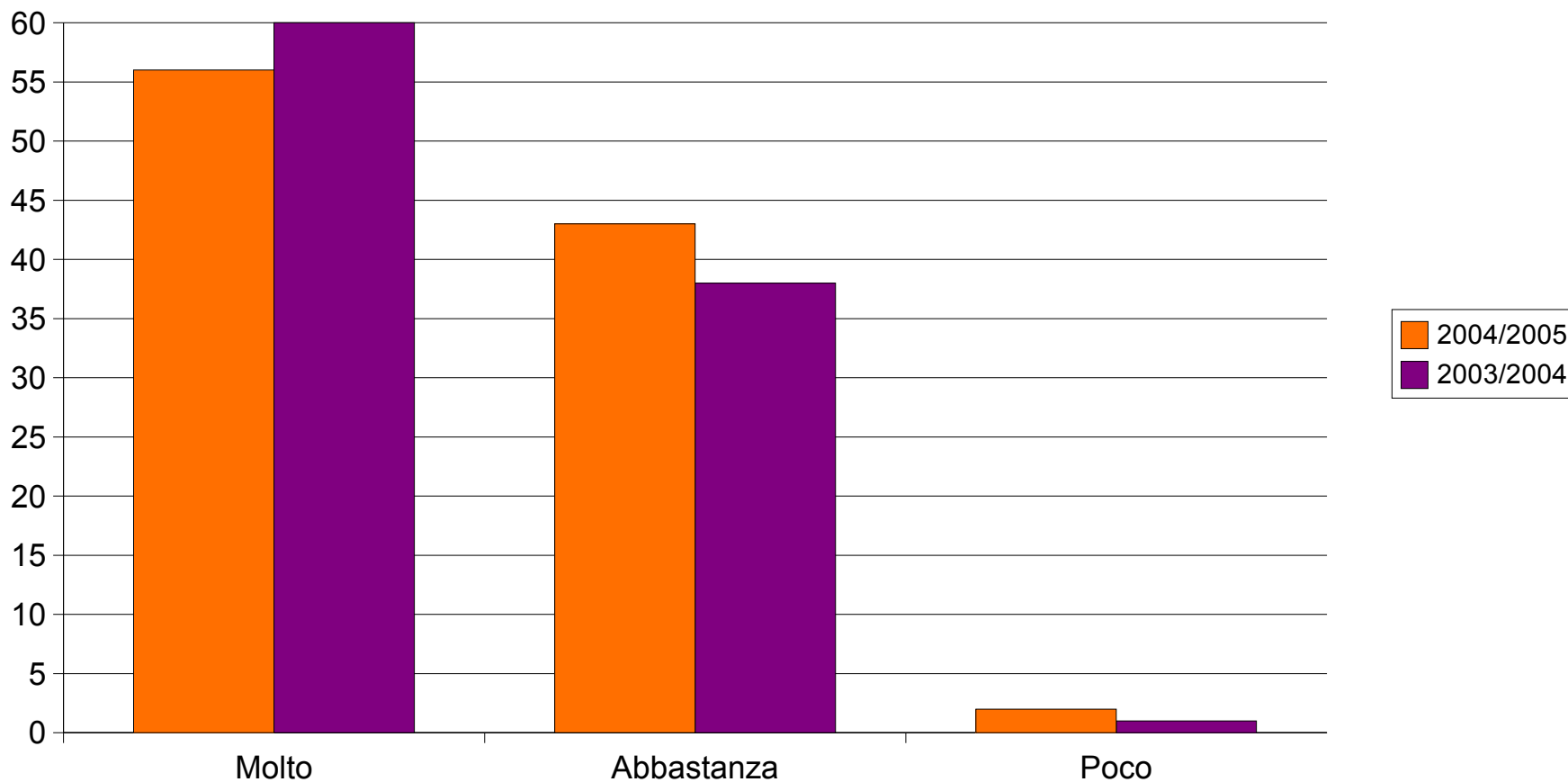
Soddisfazione per la disponibilità educativa:

Alunni %



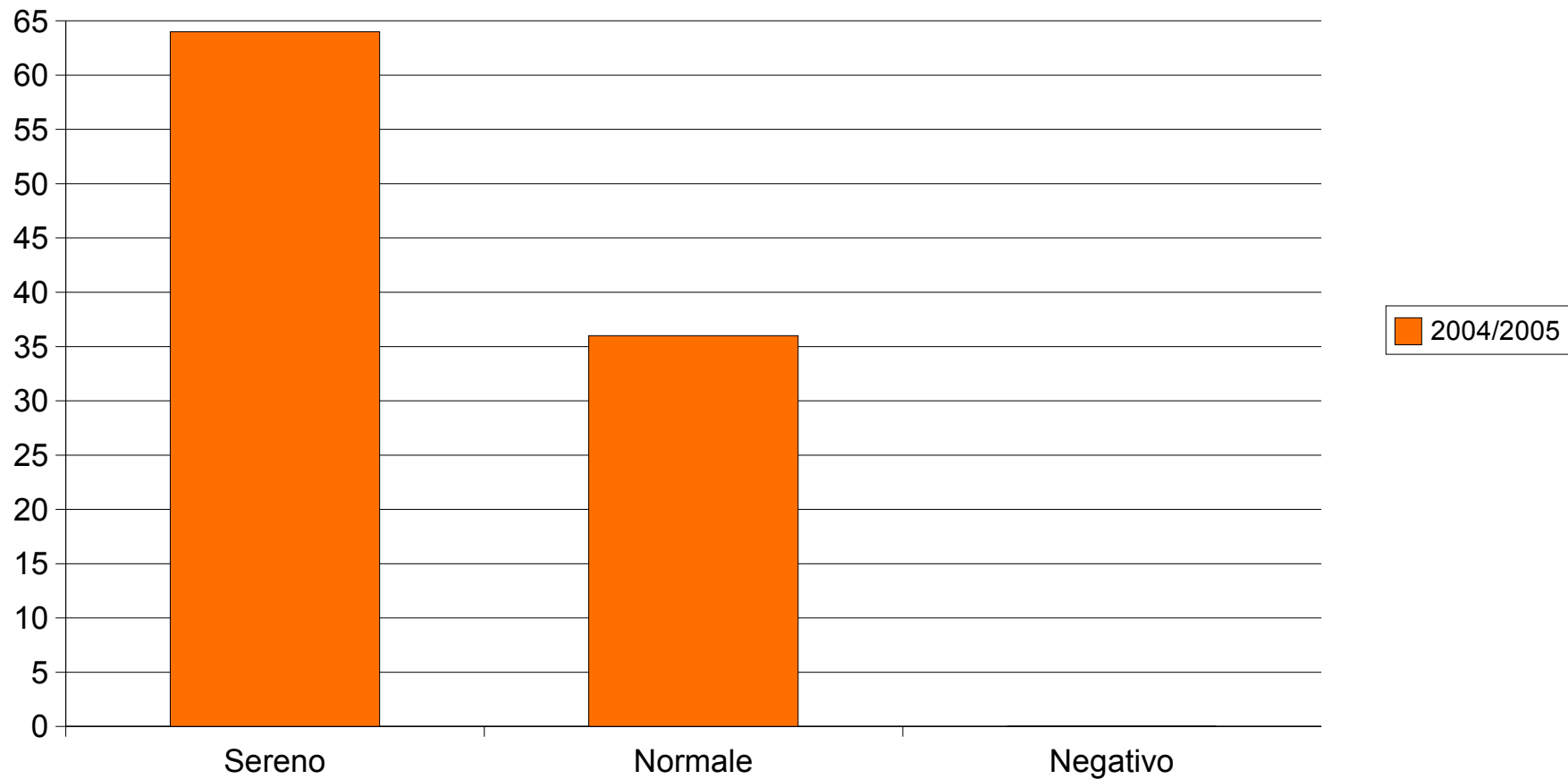
Soddisfazione per la disponibilità educativa:

Genitori %



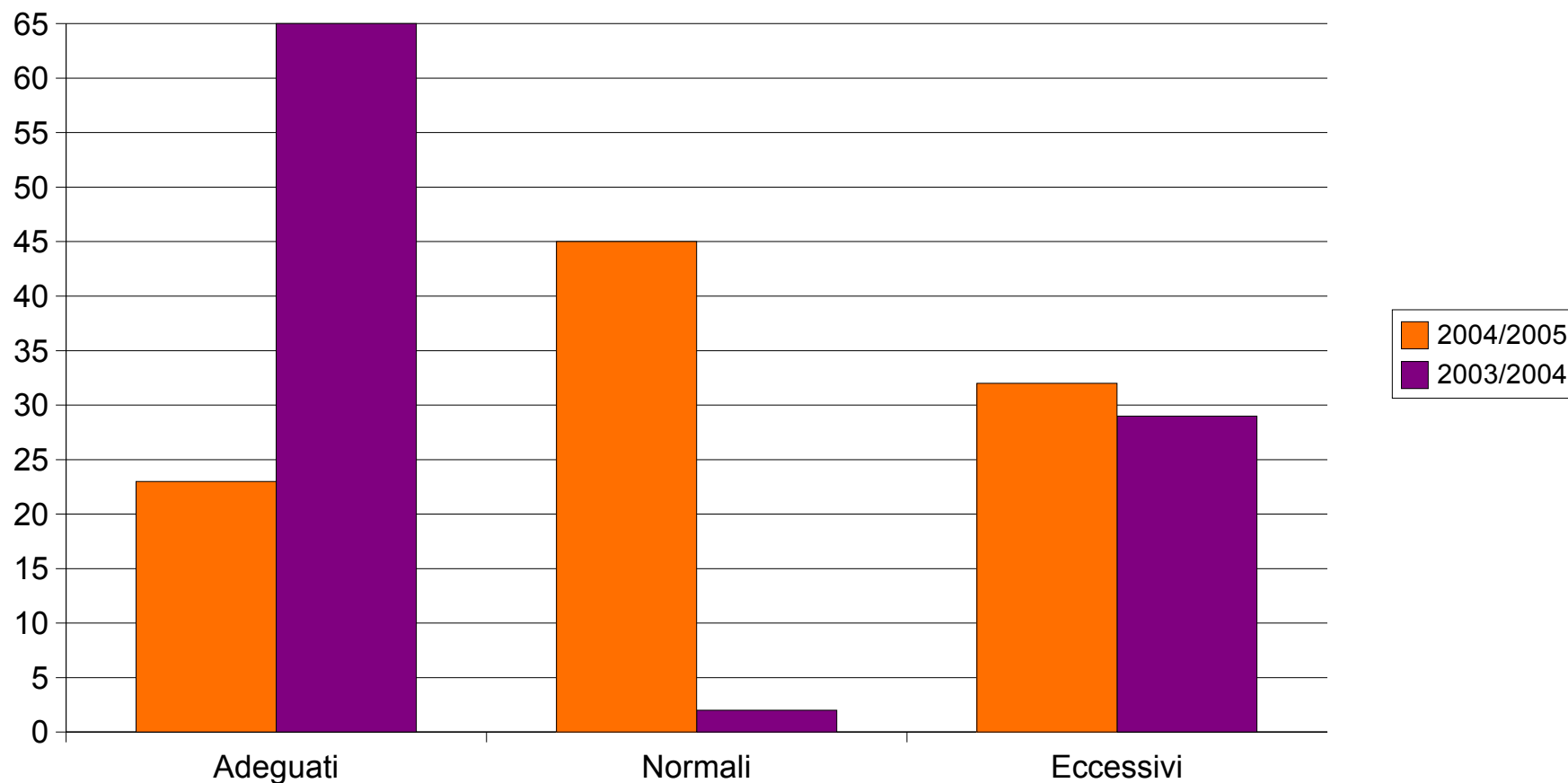
Il clima educativo è:

Genitori %



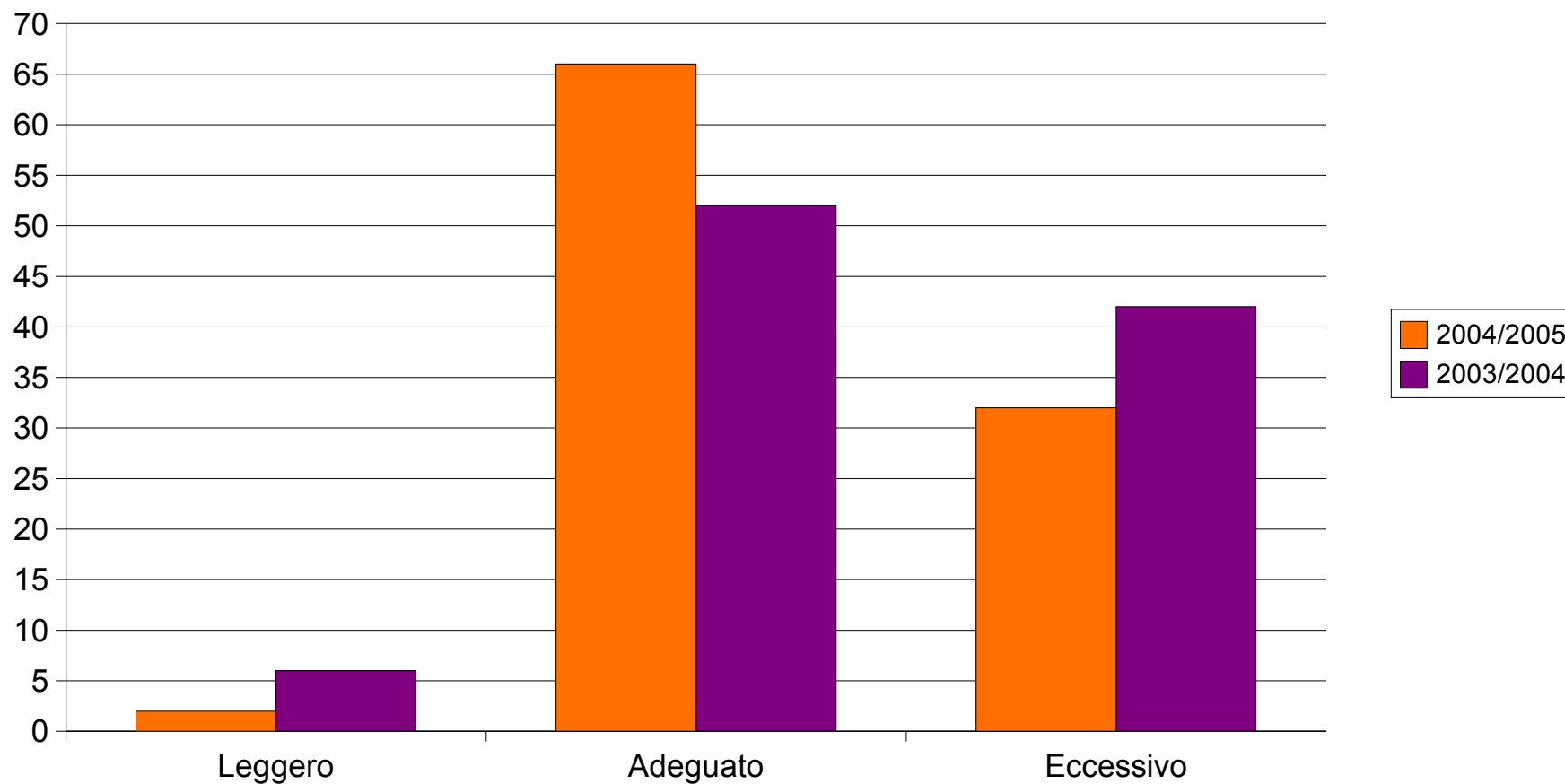
Ritmi di lavoro a scuola:

Alunni %



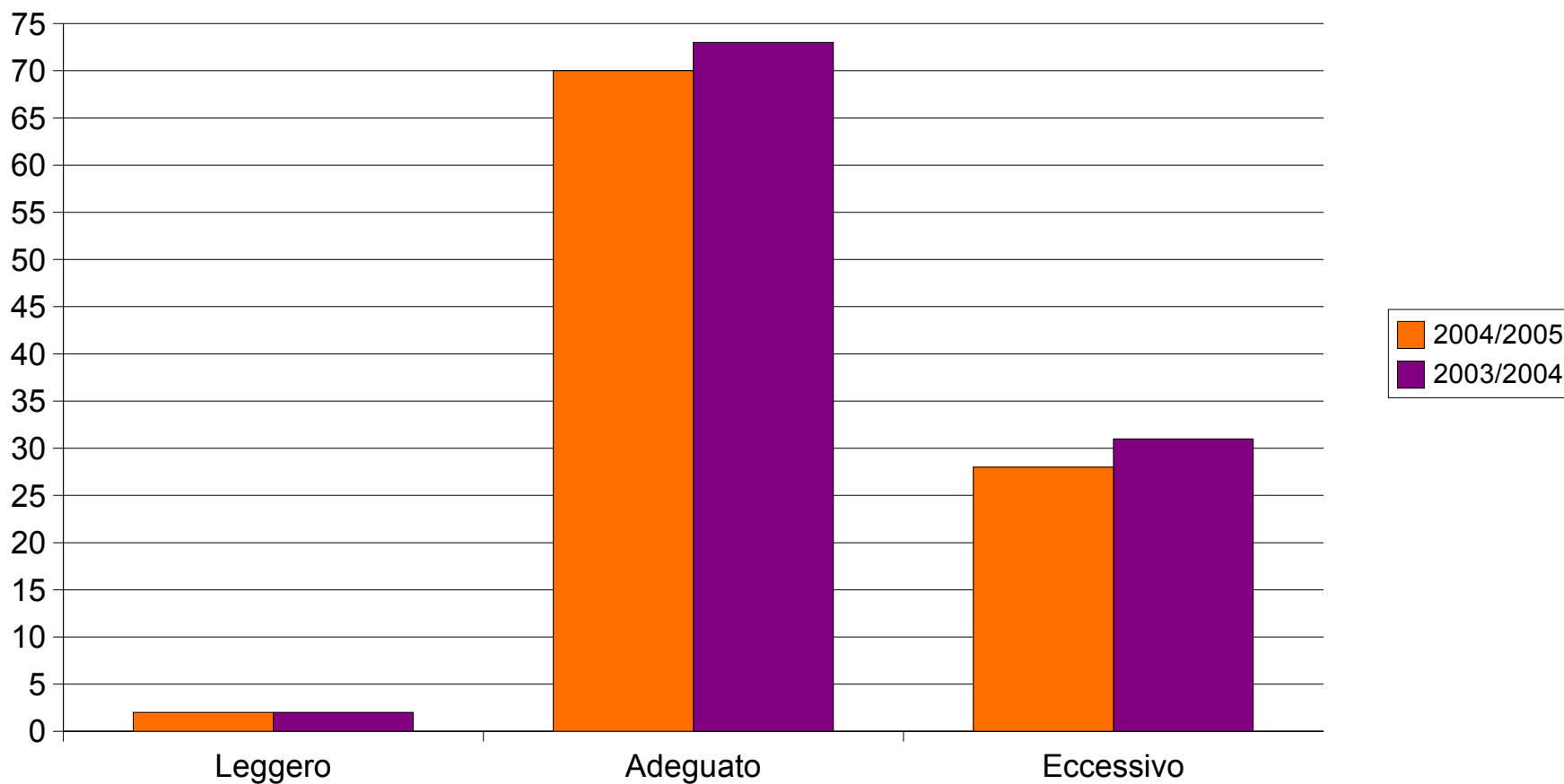
Carico di lavoro a casa:

Alunni %



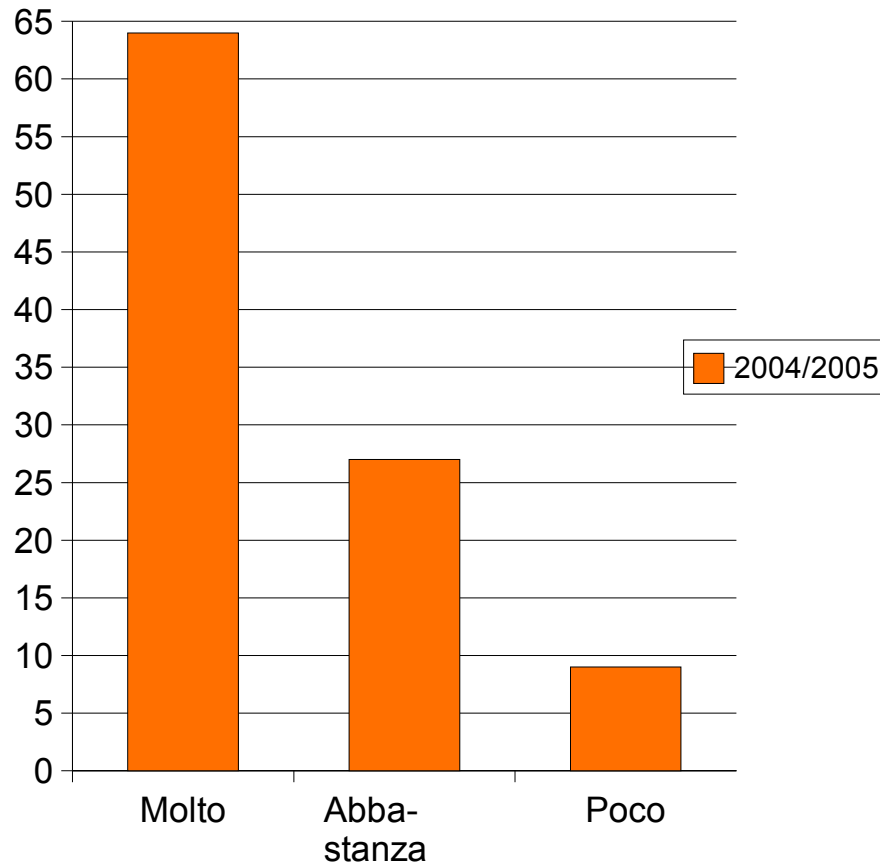
Carico di lavoro a casa:

Genitori %



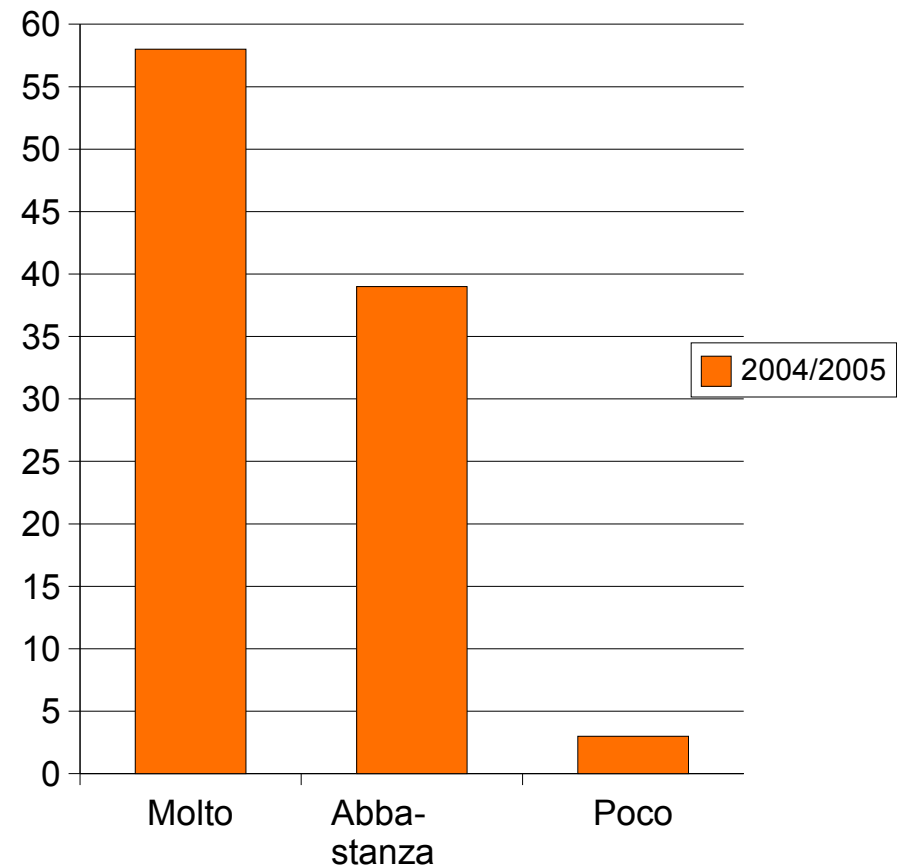
Soddisfazione dell'organizzazione dei colloqui:

Genitori %



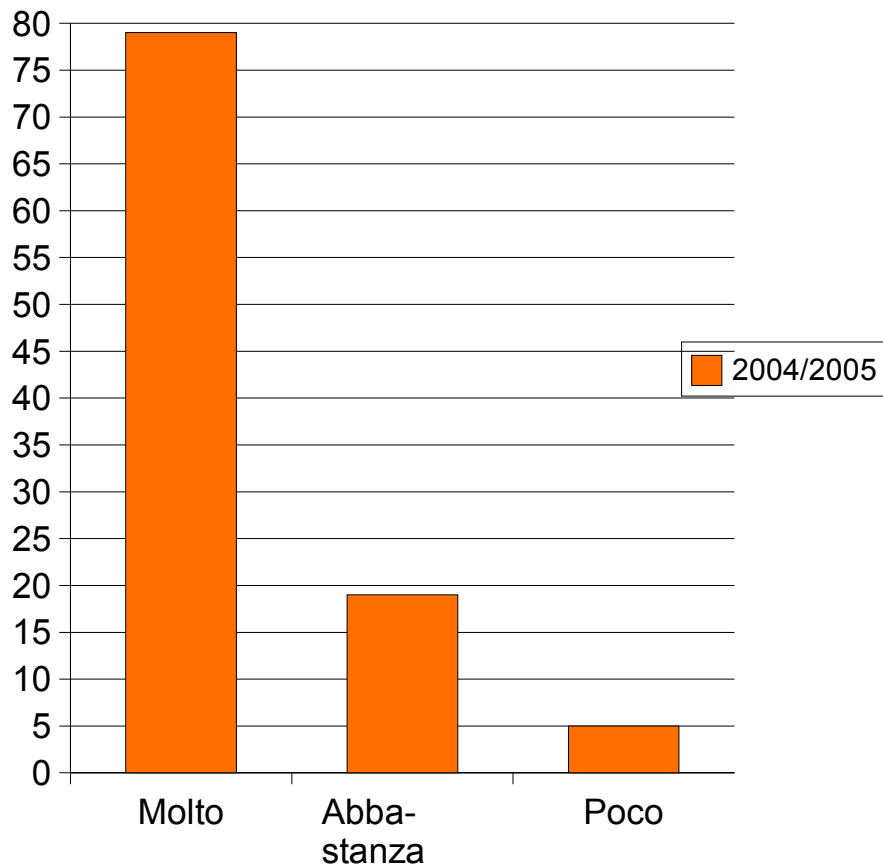
Soddisfazione dell'organizzazione della scuola (segreteria, economato, mensa,..):

Genitori %



Soddisfazione delle pagelline

Genitori %



Vorreste maggiore spazio nella scuola:

Genitori %

